

VDE Insulated



Push-lock design
For quickly lock and release socket to male square drive

Push-lock design
For quickly lock and release socket to male square drive

Drive Mechanism
Drive in both forward and reverse directions

Coated with TPR material
Fully cover with TPR lining and user can prevent directly touch in object



VDE Insulated Adjustable Wrench

- Chrome Vanadium Steel Material
- Handle insulation meets VDE and international standard DIN EN/IEC 60900
- Precision millimeter graduation head for quick adjustment
- Wider jaw opening up to 18% wider than the traditional one
- Heat treated for high hardness and torque
- Ergonomic comfort-grip handle



VDE Insulated Reversible Ratchet Handle with Quick Release

- Chrome Molybdenum Steel Ratchet Head
- Insulation meets VDE and international standard DIN EN/IEC 60900
- Robust 45 teeth ratchet mechanism
- Sockets held absolutely securely by push-button lock with ball in the square drive
- One button changes the ratchet direction
- Ergonomic comfort-grip handle

DIN 3122 ISO 3315 ASME B107.110



VDE Insulated T-Handle with Quick Release

- Chrome Molybdenum Steel Material
- Insulation meets VDE and international standard DIN EN/IEC 60900
- With safety lock and quick-release function
- Ergonomic comfort-grip handle

DIN 3122 ASME B107.110



DRIVE	ITEM NO.	L(mm)	45 Gears
1/4"	CHRI0815V4	150	5 50
3/8"	CHRI1220V4	200	5 30
1/2"	CHRI1626V4	255	5 30

DRIVE	ITEM NO.	L(mm)
1/4"	CTVJ0813V4	125 5 50
3/8"	CTVJ1220V4	210 2 12
1/2"	CTVJ1620V4	210 2 12

VDE Insulated Hex Bit Sockets

- Chrome Vanadium Steel Material
- Insulation meets VDE and international standard DIN EN/IEC 60900

DIN 7422



DRIVE	ITEM NO.	SIZE (mm)	L(mm)
6.3mm sq.	BCDA0804V4	4	55 20 200
	BCDA0805V4	5	55 20 200
	BCDA0806V4	6	55 20 200
10mm sq.	BCDA1204V4	4	65 15 150
	BCDA1205V4	5	65 15 150
	BCDA1206V4	6	65 15 150
12.5mm sq.	BCDA1605V4	5	118 10 100
	BCDA1606V4	6	118 10 100
	BCDA1608V4	8	118 10 100

VDE Insulated Extension Bar with Quick Release

- Chrome Molybdenum Steel Material
- Insulation meets VDE and international standard DIN EN/IEC 60900
- With safety lock and quick-release function

DIN 3123 ISO 3316 ASME B107.110



DRIVE	ITEM NO.	L(inch)
1/4"	CABA0804V4	4 10 100
3/8"	CABA0806V4	6 10 100
1/2"	CABA1610V4	10 5 40

ITEM NO.	SIZE (inch / mm)	MAXIMUM JAW OPENING WIDTH (mm)	L (mm)
AMAD2920	8" (200)	29	212 6 48
AMAD3325	10" (250)	33	260 6 36
AMAD3830	12" (300)	38	310 6 24

VDE Insulated 6PT Flank Sockets

- Chrome Vanadium Steel Material
- Insulation meets VDE and international standard DIN EN/IEC 60900
- Insulation to edge of socket

DIN 3124 ISO 2725-1 DIN ISO 1711-1



DRIVE	ITEM NO.	SIZE (mm)	L(mm)
1/4" 6.3mm sq.	BAEA0806V4	6	41 25 250
	BAEA0807V4	7	41 25 250
	BAEA0808V4	8	41 25 250
	BAEA0810V4	10	41 20 200
	BAEA0812V4	12	41 15 150
	BAEA0813V4	13	41 15 150
	BAEA0814V4	14	41 15 150
	BAEA1208V4	8	44.5 15 150
	BAEA1210V4	10	44.5 15 150
	BAEA1212V4	12	44.5 15 150
	BAEA1213V4	13	44.5 15 150
	BAEA1214V4	14	44.5 15 150
	BAEA1217V4	17	46.5 10 100
	BAEA1219V4	19	46.5 10 100
BAEA1222V4	22	46.5 5 50	
3/8" 10mm sq.	BAEA1610V4	10	55 10 100
	BAEA1611V4	11	55 10 100
	BAEA1612V4	12	55 10 100
	BAEA1613V4	13	55 10 100
	BAEA1614V4	14	55 10 100
	BAEA1617V4	17	55 10 100
1/2" 12.5mm sq.	BAEA1619V4	19	55 10 100
	BAEA1622V4	22	55 10 100
	BAEA1624V4	24	55 10 100

14PCS 1/4" DR. VDE 6PT Flank Socket Set



ITEM NO.	Insulated	GZA1447
6PT	Insulated	GZA1447
CONTENTS	6 (SET)	
1 CHRI0815V4		
1/4" Dr. VDE 45 Teeth Insulated Reversible Ratchet Handle with Quick Release		
7 BAEA0806V4-0814V4		
1/4" Dr. VDE Insulated 6PT Flank Sockets 6, 7, 8, 10, 12, 13, 14 mm		
3 BCDA0804V4-0806V4		
1/4" Dr. VDE Insulated Hex Bit Sockets - 4, 5, 6 mm		
1 CTVJ0813V4		
1/4" Dr. VDE Insulated T-Handle with Quick Release		
2 CABA0804V4 & 0806V4		
1/4" Dr. VDE Insulated Extension Bar with Quick Release - 4" & 6" (L)		
PLASTIC BOX: W373 x D143 x H56 (mm)		

16PCS 3/8" DR. VDE 6PT Flank Socket Set



ITEM NO.	Insulated	GZC1610
6PT	Insulated	GZC1610
CONTENTS	5 (SET)	
1 CHRI1220V4		
3/8" Dr. VDE 45 Teeth Insulated Reversible Ratchet Handle with Quick Release		
8 BAEA1208V4-1222V4		
3/8" Dr. VDE Insulated 6PT Flank Sockets 8, 10, 12, 13, 14, 17, 19, 22 mm		
4 BCDA1204V4-1208V4		
3/8" Dr. VDE Insulated Hex Bit Sockets - 4, 5, 6, 8 mm		
1 CTVJ1220V4		
3/8" Dr. VDE Insulated T-Handle with Quick Release		
2 CABA1206V4 & 1210V4		
3/8" Dr. VDE Insulated Extension Bar with Quick Release - 6" & 10" (L)		
PLASTIC BOX: W373 x D289 x H56 (mm)		

16PCS 1/2" DR. VDE 6PT Flank Socket Set



ITEM NO.	Insulated	GZC1609
6PT	Insulated	GZC1609
CONTENTS	5 (SET)	
1 CHRI1626V4		
1/2" Dr. VDE 45 Teeth Insulated Reversible Ratchet Handle with Quick Release		
8 BAEA1610V4-1624V4		
1/2" Dr. VDE Insulated 6PT Flank Sockets 10, 11, 12, 13, 14, 17, 19, 22, 24 mm		
3 BCDA1605V4-1608V4		
1/2" Dr. VDE Insulated Hex Bit Sockets - 5, 6, 8 mm		
1 CTVJ1620V4		
1/2" Dr. VDE Insulated T-Handle with Quick Release		
2 CABA1605V4 & 1610V4		
1/2" Dr. VDE Insulated Extension Bar with Quick Release - 5" & 10" (L)		
PLASTIC BOX: W373 x D289 x H56 (mm)		

12PCS 1/4" DR. VDE 6PT Flank Socket Set



ITEM NO.	Insulated	GZA1246
6PT	Insulated	GZA1246
CONTENTS	6 (SET)	
1 CHRM0815V4		
1/4" Dr. VDE 72 Teeth Insulated Reversible Ratchet Handle with Quick Release		
7 BAEA0806V4-0814V4		
1/4" Dr. VDE 6PT Flank Sockets 6, 7, 8, 10, 12, 13, 14 mm		
4 CAAA0802V4-0806V4		
1/4" Dr. VDE Extension Bar - 2", 3", 4", 6" (L)		
PLASTIC BOX: W373 x D143 x H56 (mm)		

12PCS 3/8" DR. VDE 6PT Flank Socket Set



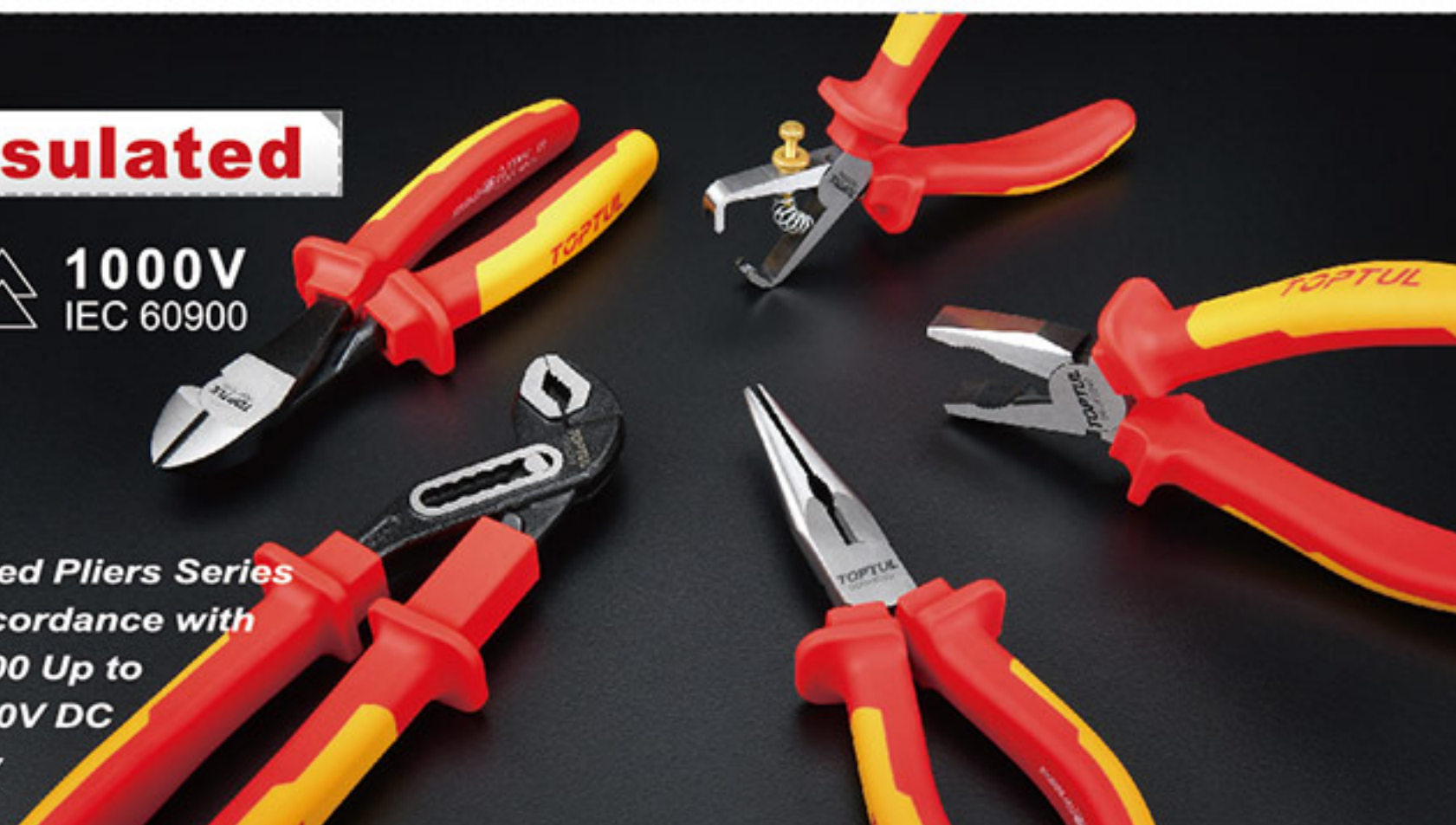
ITEM NO.	Insulated	GZA1245
6PT	Insulated	GZA1245
CONTENTS	6 (SET)	
1 CHRM1220V4		
3/8" Dr. VDE 72 Teeth Insulated Reversible Ratchet Handle with Quick Release		
8 BAEA1208V4-1219V4		
3/8" Dr. VDE 6PT Flank Sockets 8, 10, 11, 12, 13, 14, 15, 17, 19 mm		
2 CAAA1203V4 & 1210V4		
3/8" Dr. VDE Extension Bar - 3" & 10" (L)		
PLASTIC BOX: W373 x D143 x H56 (mm)		



VDE Insulated



TOPTUL
Certified Insulated Pliers Series
Produced in Accordance with
DIN EN/IEC 60900 Up to
1000V AC & 1500V DC
Electrical Safety



WIRE CLASSES

Material examples	Wire hardness	Material examples	Wire hardness
(Copper, Aluminum)	Soft Wire	(Spring Steel)	Piano Wire
(Iron Wire)	Medium Hard Wire		Cable
(Steel Wire)	Hard Wire		Wire Rope

CUTTING EDGE SHAPES

Center cutter	Cutting edges with bevel	Cutting with very small bevel	Cutting without facet

JAWS FORMS

Flat jaws	Half-round jaws	Round jaws

GRIPPING SURFACES

Serrated	Smooth	Cross-hatched

SPRING-LOADED RETURN

with opening spring

VDE Insulated

Long Nose Pliers

- Chrome Molybdenum Steel Material
- Handles insulation meets VDE and international standard DIN EN/IEC 60900
- High-frequency hardened cutting edges for optimum power and durability
- Serrated and rigid jaws, ideal for forming, bending and precision assembly works
- Ergonomic comfort-grip handle
- Manufacturing according to DIN ISO 5745



ITEM NO.	SIZE (inch)	MAX. CAPACITY		Hand	Weight (lb)
		Ø (mm)	Ø (mm)		
DGCB2206	6	2.5	1.6	10	40
DGCB2208	8	3.2	2.2	10	40

VDE Insulated

Combination Pliers

- Chrome Molybdenum Steel Material
- Handles insulation meets VDE and international standard DIN EN/IEC 60900
- Precision-hardened pliers head for on-the-job toughness
- High-frequency hardened cutting edges for optimum power and durability
- Ergonomic comfort-grip handle
- Manufacturing according to DIN ISO 5746



ITEM NO.	SIZE (inch)	MAX. CAPACITY		Hand	Weight (lb)
		Ø (mm)	Ø (mm)		
DGCA2206	6	3.1	2.0	10	40
DGCA2207	7	3.4	2.2	10	40
DGCA2208	8	3.8	2.5	10	40

VDE Insulated

Box-Joint Water Pump Pliers

- Chrome Molybdenum Steel Material
- Handles insulation meets VDE and international standard DIN EN/IEC 60900
- Heavy duty box-joint design, self-gripping teeth for joints, nuts and pipes
- Ergonomic comfort-grip handle
- Manufacturing according to DIN ISO 8976



ITEM NO.	SIZE (inch)	GRIP CAPACITY Ø (mm)	ADJUSTMENT	Hand	Weight (lb)

VDE Insulated

Diagonal Cutting Pliers

- Chrome Molybdenum Steel Material
- Handles insulation meets VDE and international standard DIN EN/IEC 60900
- Short jaws and beveled cutting edges permit close cutting of wire
- Hot-riveted joints ensures smooth action and no handle wobble
- Ergonomic comfort-grip handle
- Manufacturing according to DIN ISO 5749



ITEM NO.	SIZE (inch)	MAX. CAPACITY			Hand	Weight (lb)
		Ø (mm)	Ø (mm)	Ø (mm)		
DGCC2206	6	4.0	2.8	2.0	10	40

VDE Insulated

Heavy Duty Diagonal Cutting Pliers

- Chrome Molybdenum Steel Material
- Handles insulation meets VDE and international standard DIN EN/IEC 60900
- High-leverage design, rivet is closer to the cutting edge for optimum cutting and gripping power
- Induction hardened cutting knives for long service life
- Ergonomic comfort-grip handle
- Manufacturing according to DIN ISO 5749



ITEM NO.	SIZE (inch)	MAX. CAPACITY			Hand	Weight (lb)
		Ø (mm)	Ø (mm)	Ø (mm)		
DGCF2208	8	4.2	3.0	2.5	10	40

VDE Insulated

Wire Stripping Pliers

- Chrome Molybdenum Steel Material
- Handles insulation meets VDE and international standard DIN EN/IEC 60900
- Induction hardened long life stripping edges
- Easy lockable adjusting screw for setting the desired diameter up to Ø4.5mm
- Ergonomic comfort-grip handle
- Manufacturing according to DIN ISO 8979



ITEM NO.	SIZE (inch)	STRIPPING CAPACITY (mm²)	Hand	Weight (lb)

3PCS

VDE Insulated Pliers Set



ITEM NO.	CONTENTS	8 (SET)
GAAE0308	1 DGCA2208 VDE Insulated Combination Pliers - 8" 1 DGCB2208 VDE Insulated Long Nose Pliers - 8" 1 DGCF2208 VDE Insulated Heavy Duty Diagonal Cutting Pliers - 8"	

3PCS

VDE Insulated Pliers Set



ITEM NO.	CONTENTS	8 (SET)
GAAE0301	1 DGCA2207 VDE Insulated Combination Pliers - 7" 1 DGCB2208 VDE Insulated Long Nose Pliers - 8" 1 DGCC2206 VDE Insulated Diagonal Cutting Pliers - 6"	

4PCS

VDE Insulated Pliers Set



ITEM NO.	CONTENTS	8 (SET)
GAAE0406	1 DGCA2207 VDE Insulated Combination Pliers - 7" 1 DGCB2208 VDE Insulated Long Nose Pliers - 8" 1 DGCC2206 VDE Insulated Diagonal Cutting Pliers - 6" 1 DGCD2206 VDE Insulated Wire Stripping Pliers - 6"	

VDE Insulated

1. Black Hardened Magnetic Tip extends product service life and facilitates picking up fasteners.
2. Expert quality, SNCM+V Alloy Steel enables "High Strength" blade performance.
3. Shank locked into the handle molding maximizes the turning power and secures the safety of use.
4. Blade insulation meets VDE and international standard DIN EN/IEC 60900.
5. Ergonomic Designed Handle provides optimum comfort in use especially for high torque tightening and loosening works.



- Expert quality, specially hardened and tempered SNCM+V Steel round blade
- Blade insulation meets VDE and international standard DIN EN/IEC 60900
- High performance black hardened, magnetic tip
- PP+TPR material non-slippery grip handle

VDE Insulated Slotted Screwdrivers



TYPE	ITEM NO.	(mm)	(mm)	L1 (mm)	L (mm)		
	FAEB0308	3	0.5	75	162	5	40
	FAEB0410	4	0.8	100	205	5	40
	FAEB5E13	5.5	1.0	125	240	5	40
	FAEB6E15	6.5	1.2	150	265	5	40
	FAEB0818	8	1.2	175	300	5	40

VDE Insulated Pozidriv Screwdrivers



TYPE	ITEM NO.	SIZE	L1(mm)	L(mm)		
	FCEB0008	PZ0	75	162	5	40
	FCEB0110	PZ1	100	205	5	40
	FCEB0210	PZ2	100	215	5	40
	FCEB0315	PZ3	150	275	5	30

VDE Insulated Phillips Screwdrivers



TYPE	ITEM NO.	SIZE	L1(mm)	L(mm)		
	FBEB0008	PH0	75	162	5	40
	FBEB0110	PH1	100	205	5	40
	FBEB0210	PH2	100	215	5	40
	FBEB0315	PH3	150	275	5	30

7PCS VDE Insulated Screwdriver Set



ITEM NO.	CONTENTS	
GAAE0704	<ul style="list-style-type: none"> 3 FAEB0410-6E15 VDE Insulated Slotted Screwdrivers 4x100, 5.5x125, 6.5x150 3 FBEB0110-0315 VDE Insulated Phillips Screwdrivers PH1x100, PH2x100, PH3x150 1 FAJA0315 Voltage Tester, CE Approval -145mm(L) (Voltage Range 120 - 250 V/AC) 	8 (SET)

6PCS VDE Insulated Screwdriver Set



ITEM NO.	CONTENTS	
GAAE0612	<ul style="list-style-type: none"> 3 FAEB0308-5E13 VDE Insulated Slotted Screwdrivers 3x75, 4x100, 5.5x125 3 FBEB0110 & 0210 VDE Insulated Phillips Screwdrivers PH1x100 & PH2x100 1 FAJA0315 Voltage Tester, CE Approval -145mm(L) (Voltage Range 120 - 250 V/AC) 	8 (SET)

TOPTUL
VDE Insulated



VDE Insulated Cable Knife with Straight Blade

- Suitable for stripping thick wires and cables
- Straight blade design
- Hardened Stainless Steel
- With blade protection cap
- Insulation according to IEC 60900
- Ergonomically shaped insulating handle



ITEM NO.	BLADE LENGTH (mm)	LENGTH (mm)		
SFAA5020V4	50	200	10	50

4PCS Spare Blades for Insulated Cable Knife

- 4 pcs spare blades for TOPTUL part no. SFAC5018V4
- Replaceable Blade VDE Insulated Cable Knife
- Durable blade made of vacuum Hardened Stainless Steel
- Display packed

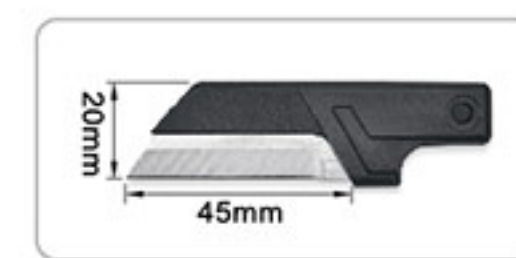


VDE Insulated Cable Knife with Hooked Blade

- Suitable for stripping thick wires and cables
- Hook type, sickle shaped blade design
- Hardened Stainless Steel
- With blade protection cap
- Insulation according to IEC 60900
- Ergonomically shaped insulating handle



ITEM NO.	BLADE LENGTH (mm)	LENGTH (mm)		
SFAB5020V4	45	190	10	50



ITEM NO.	BLADE LENGTH (mm)		
SLAD0505V0	45	25	100

VDE Insulated Cable Knife with Replaceable Blade

- Suitable for stripping thick wires and cables
- Straight blade design
- Hardened Stainless Steel
- Built-in blade protection guard
- Insulation according to IEC 60900
- Ergonomically shaped insulating handle



ITEM NO.	BLADE LENGTH (mm)	LENGTH (mm)		
SFAC5018V4	45	180	10	50



TOPTUL
VDE Insulated

Digital Multimeter

- Digital multimeter with basic measuring functions
- Test lead set with test tip (red/black)
- Central dial switch
- Large LCD with 3-1/2 digit display 2000 counts
- Low battery indicator and auto shut off (after 15 minutes)
- Additional Features: Data hold, auto range, auto power off selection, auto power off cancelation



Function:

- AC and DC voltage measurement
- AC and DC current measurement
- Resistance measurement
- Diode test
- Continuity test with buzzer
- Transistor test (NPN & PNP)
- LED test



DIGITAL MULTIMETER

ITEM NO.	EAA0260E
SPECIFICATIONS	
AC Voltage	2V / 20V / 200V / 600V
DC Voltage	200mV / 2V / 20V / 200V / 600V
Resistance	200Ω / 2kΩ / 20kΩ / 200kΩ / 2MΩ / 20MΩ
AC / DC Current	200μA / 2000μA / 20mA / 200mA / 2A / 10A
Diode	1V
Continuity Check	200Ω
Transistor (NPN/PNP)	2000 hFE
LED Test	Yes
Operating Environment	0 ~ 50°C (32 ~ 122°F) at < 80% R.H. (non-condensing)
Storage Environment	-10 ~ 60°C (14 ~ 140°F) at < 70% R.H. (non-condensing)
Power Supply	Battery 1.5V AAA x 2pcs (included)
Fuse Protection	0.5A / 600V Ø5xL20mm, 10A / 600V Ø6.35xL32mm
Testing Standard	IEC 61010-1 / IEC 61010-2-030 / IEC 61010-2-033
Measurement Category	CAT II 600V / CAT III 300V
Pollution Degree	2
Dimension	138mm (L) x 70mm (W) x 32mm (H)
Weight	Approx. 140g



• Fold-out stand

Digital Clamp Meter

- Digital clamp meter with basic measuring functions
- Test lead set with test tip (red/black)
- Central dial switch
- Large LCD with 3-3/4 digit display 4000 counts
- Max. diameter for clamp jaw: Ø30mm
- Low battery indicator and auto shut off (after 30 minutes)
- Additional Features: Data hold, auto range, auto power off selection



Function:

- AC and DC voltage measurement
- AC and DC current measurement
- Resistance measurement
- Diode test
- Continuity test with buzzer
- Frequency measurement



DIGITAL CLAMP METER

ITEM NO.	EAAC0260E
SPECIFICATIONS	
AC Voltage	4V / 40V / 400V / 600V
DC Voltage	400mV / 4V / 40V / 400V / 600V
Resistance	400Ω / 4kΩ / 40kΩ / 400kΩ / 4MΩ / 40MΩ
AC Current	400A / 600A
DC Current	400A / 600A
Diode	1V
Continuity Check	400Ω
Hz Frequency	5Hz / 50Hz / 500Hz / 5kHz / 50kHz / 100kHz
Operating Environment	0 ~ 50°C (32 ~ 122°F) at < 80% R.H. (non-condensing)
Storage Environment	-10 ~ 60°C (14 ~ 140°F) at < 70% R.H. (non-condensing)
Operating Altitude	Altitude up to 2000m
Power Supply	Battery 1.5V AAA x 2pcs (included)
Testing Standard	IEC 61010-1 / IEC 61010-2-032 / IEC 61010-2-033
Measurement Category	CAT III 600V
Pollution Degree	2
Dimension	190mm (L) x 71mm (W) x 37mm (H)
Weight	Approx. 200g



Polarity Mark

Multifunctional Voltage Tester with Digital Display

- AC and DC voltage tests up to 690V with LED and LCD display
- Continuity tester with acoustic and optical display
- Phase rotation indicator for 3-phase systems
- Polarity detection positive / negative
- High voltage indication ($\geq 50V$ AC/DC)
- Built-in flashlight for testing in dark places
- Dust and water protection to IP 64
- Powered by 2 x AAA batteries (not included)



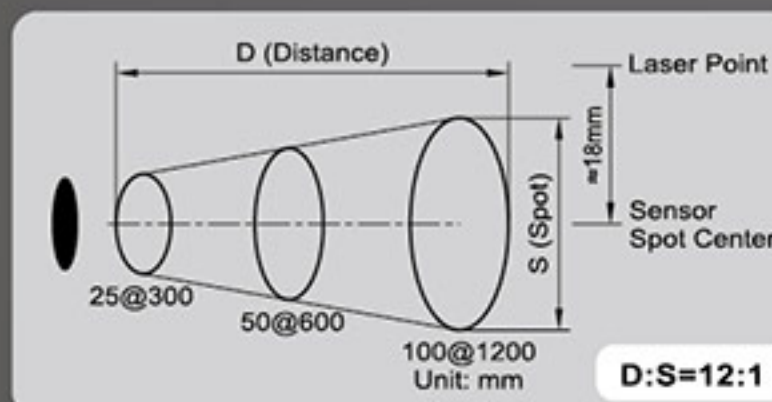
MULTIFUNCTIONAL VOLTAGE TESTER WITH DIGITAL DISPLAY

ITEM NO.	EAAA0169
SPECIFICATIONS	
Voltage Range	12 ~ 690V AC / DC
Frequency Range	0 - 70 Hz (AC)
LED Voltage Indication	12 / 24 / 50 / 120 / 230 / 400 / 690V
LCD Resolution	7 ~ 690V
Peak Current	<3.5mA (at 690V)
Continuity Test	0 ~ 550k Ω
Operating Temperature	-10 ~ 55°C
Storage Temperature	-20 ~ 60°C
Humidity	Up to 85% non-condensing
Operating Altitude	Altitude up to 2000m
Testing Standard	EN 61243-3 / IEC 61243-3 EN 61010-1 / IEC 61010-1
Measurement Category	CAT III 690V / CAT IV 600V
Pollution Degree	2
Power	AAA batteries x 2 pcs (not included)



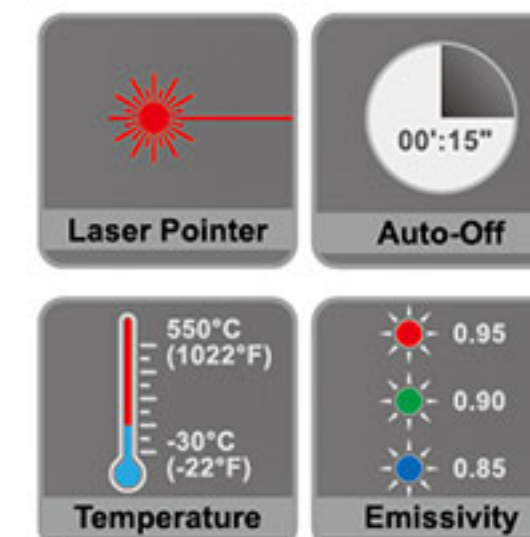
Non-Contact Infrared Thermometer

- Precise non-contact measurement
- Displays in Celsius ($^{\circ}C$) or Fahrenheit ($^{\circ}F$)
- Laser pointer for accurate aiming
- Data hold and auto power off function
- High sensitive, providing fast and easy measuring
- Backlit display for easy reading
- Suitable for most automotive and industrial applications



NON-CONTACT INFRARED THERMOMETER

ITEM NO.	EABA0155
SPECIFICATIONS	
Measuring Range	-30°C to 550°C (-22°F to 1022°F)
Measuring Accuracy	$\pm 2.5\%$ or $3^{\circ}C$ (Note: Specified accuracy is for ambient temperature variation)
Distance to Spot Ratio	12:1
Display Resolution	$0.1^{\circ}C$ / $0.1^{\circ}F$
Emissivity Selectable	0.85 / 0.90 / 0.95
Laser Radiation	Class I, <0.4mW
Operating Temperature	$0^{\circ}C$ ~ $50^{\circ}C$
Operating Humidity	Up to 80% RH
Power Supply	9V Battery (not included)



Non-Contact Voltage Tester

- Sensitive voltage detection from range 80-1000V AC (50-60Hz)
- Suitable for testing AC voltage in outlets, live wire, cables, cords, circuit breakers, lighting fixtures, switches...etc.
- Fitted with visible LED light voltage indicator in tip
- CAT III 1000V safety rating
- In accordance with EN 61010-1 and EN 61010-2-030, CE compliant
- Powered by 2 x AAA batteries (not included)



Ambient temperature:
0°~40°C, 95% rel. humidity at max., do only use in interior rooms up to an altitude of 2000m at max.

ITEM NO.	TEST VOLTAGE RANGE	FREQUENCY	L (mm)	Weight (g)	Box Qty
FAJC0816	80 - 1000V AC	50 - 60Hz	160	10	100

Circuit Tester - Brass

- With brass body housing
- Test tip protected with screw cap
- Testing electrical circuits from 6 to 24 volts DC only
- Supplied with 85cm cable and insulated alligator clip



ITEM NO.	TEST VOLTAGE RANGE	L (mm)	Weight (g)	Box Qty
JJDD0124	6 - 24V DC	110	20	200

Heavy Duty Automotive Circuit Tester

- Testing electrical circuits from 6 to 24 volts DC only
- Suitable for testing faulty lights, fuses, and alternators, relays...etc.
- Supplied with 152cm cable and insulated alligator clip



ITEM NO.	TEST VOLTAGE RANGE	L (mm)	Weight (g)	Box Qty
JJDD0224	6 - 24V DC	203	6	72

Automotive Circuit Tester

- Testing electrical circuits from 3 to 48 volts DC
- 2 LEDs indicate live circuit and positive (+) / negative (-) polarity
- Universal test instrument for motor vehicle electrics and electronics
- Supplied with 90cm cable and insulated alligator clip
- CE certified



Integral, spring loaded, pointed probe for testing through insulation



ITEM NO.	TEST VOLTAGE RANGE	L (mm)	Weight (g)	Box Qty
JJDC0148	3 - 48V DC	135	10	100

8PCS Gas Soldering Iron Set

- Gas operated micro soldering device up to 1,300°C / 2,370°F
- Powered by butane (lighter fuel) and features a piezoelectric ignition
- Portable and lightweight suitable for heating, soldering and heat-shrinking
- Supplied with an protective cap and features an adjustable gas control lever



No.	Contents
A	Soldering Iron (incl. Conical Type Solder Tip)
B	2.5mm Round Solder Tip
C	3.5mm Chisel Solder Tip
D	4.5mm Hoof Solder Tip
E	Heat Deflector Tip
F	Tip Cleaning Sponge
G	Solder Wire (99.3% Tin + 0.7% Copper)
H	Protective Cap

ITEM NO.	EGAE0801	Weight (g)	Box Qty
SPECIFICATIONS			20
Power Range	30W~150W		
Soldering Tip Temperature	400°C~450°C (750°F~840°F)		
Hot Blower Temperature	600°C (1110°F)		
Torch Temperature (Max.)	1300°C (2370°F)		
Warm-Up Time	45 seconds		
Gas Container Capacity	15 ml		
Operating Time	75~90 Minutes		



Desoldering Pumps

- Aluminum alloy body construction for heavy use and durability
- Fitted with hard wearing Teflon suction tip
- For the easy and quick removal of surplus molten solder during desoldering and soldering operations
- Powerful suction for solder removal, easy for one-handed use



ITEM NO.	L (mm)	Weight (g)	Box Qty
EBAB0120	200	40	120



Lead-Free Soldering Wire Dispenser Tube

- 99.3% Tin and 0.7% Copper
- Melting temperature: Approx 227 °C
- Wire Diameter: 1 mm
- Contains a rosin flux core designed specifically for electrical work



ITEM NO.	Diameter Ø (mm)	Weight (g)	Weight (oz)	Box Qty
EBAA0110	1	17	6	60

Cable Cutter

- Chrome Vanadium Steel Material
- Professional heat treated & machined cutting edge
- Shear action for a clean, precise cut
- Comfortable double plastic-coated grip handle
- Cut copper and aluminum cable
- Notched end for stripping wires



ITEM NO.	SIZE (inch)	MAX. CAPACITY		L (mm)	Weight (kg)
		Ø (mm)	mm ²		
DNAA1206	6	10	22	6	120

Cable Cutter

- Chrome Vanadium Steel Material
- Induction hardened cutting edge
- Shear action for a clean, precise cut
- Comfortable double plastic-coated grip handle
- Cut copper and aluminum cable
- Notched end for stripping wires



ITEM NO.	SIZE (inch)	MAX. CAPACITY		L (mm)	Weight (kg)
		Ø (mm)	mm ²		
DNAA1208	8	13	38	6	72

Cable Cutter

- Chrome Vanadium Steel Material
- Induction hardened cutting edge
- Shear action for a clean, precise cut
- Comfortable double plastic-coated grip handle



ITEM NO.	SIZE (inch)	MAX. CAPACITY		L (mm)	Weight (kg)
		Ø (mm)	mm ²		
DNAA1210	10	17	60	6	48

Cable Cutters

- Chrome Molybdenum Steel Material
- Specially hardened & precision machined cutting edges
- Shear-cut and angled blade for clean and sharp cut
- Tubular handle design for reducing weight
- Optimum lever action requires less effort
- Cut copper and aluminum cable
- Ergonomic designed bi-component soft grip handle



• DNAC1223



• DNAC1218

ITEM NO.	SIZE (inch)	MAX. CUTTING CAPACITY			L (mm)	Weight (kg)
		Ø (mm)	mm ²	AWG		
DNAC1218	18	21	150	300	1	20
DNAC1223	23	32	400	800	1	10

Heavy Duty Multi-Purpose Electricians Scissors

- Blade made from JIS SUS420 J2 Stainless Steel
- HRC 56 induction hardened cutting edges
- Cutting cable up to 70 mm²
- One blade is micro-serrated for non-slip cutting
- Crimp 1-16 mm² and 22-14 AWG insulated & non-insulated terminals
- Fiberglass-reinforced Nylon + TPR made ergonomic modern handles



ITEM NO.	Cutting Length (mm)	Cutting Cables (mm ²)	L (mm)	Crimping Capacity		L (mm)	Weight (kg)
				mm ²	AWG		
SBBA0516	43	70	160	1 - 16	22 - 14	12	120

Ratcheting Cable Cutter

- For excellent cutting of copper and aluminum single conductors as well as multiple stranded cables
- High leverage ratcheting mechanism for easier cutting
- Drop forged Chrome Molybdenum Steel blades for superior strength and durability
- Professional heat treated & machined cutting edge
- Safety lock keeps pliers securely closed when not in use



ITEM NO.	SIZE (inch)	MAX. CUTTING CAPACITY			L (mm)	Weight (kg)
		Ø (mm)	mm ²	AWG		
DNAB1010	10	32	325	600	10	30

Multi-Purpose Electricians Scissors

- Specially designed for repair service use
- Heavy-duty high carbon Stainless Steel, Mighty Molybdenum and Vanadium Alloy blades
- Precision hollow-ground and hardened long-lasting cutting edge
- Micro-serration blade design for strong grips on cutting objects
- Extension tang design to increase overall input leverage
- High grade Nylon-made ergonomic modern handles (with 30% fiberglass)



ITEM NO.	Cutting Length (mm)	Cutting Cables (mm ²)	L (mm)	L (mm)	Weight (kg)

Automatic Wire Stripper

- Sliding cross-block design for easy set-up the desired length from 5-12mm
- Hardened steel blades provide extra strength and longer life
- Trigger-actuated design provides fast & easy stripping wires
- Lightweight, ergonomic design is constructed from reinforced fiberglass & Nylon



ITEM NO.	CAPACITY		WIRE CUTTER Ø (mm)	L (mm)	Weight (kg)	
	mm ²	AWG				
DICA1306	0.2 - 6.0	24 - 10	2.0	190	10	60

Wire Stripping Pliers

- Chrome Molybdenum Steel Material
- Induction hardened long life stripping edges
- Easy lockable adjusting screw for setting the desired diameter up to Ø4.5mm
- Ergonomic comfort-grip handle
- Manufacturing according to DIN ISO 8979



ITEM NO.	SIZE (inch)	STRIPPING CAPACITY (mm ²)	L (mm)	Weight (kg)

Multi-Purpose Wire Stripper

- Designed to cutting and stripping cables and wires
- Spring-loaded mechanism provides quick self-opening action
- Safety locking device for safe storage
- Includes 2 spare cable stripping blades (SK5)



• DIDA1430



• DIDA1020

ITEM NO.	CAPACITY		L (mm)	Weight (kg)	
	Ø (mm)	AWG			
DIDA1020	0.8 - 2.6	20 - 10	117	10	120
DIDA1430	0.2 - 0.8	30 - 20	117	10	120



• Includes 2 spare cable stripping blades (SK5)

Modular Crimping Tool

- Professional modular crimping tool with cable cutting and stripping functions
- Suitable for crimping 6-position RJ-11/RJ-12 connectors and 8-position RJ-45 connectors
- Ratchet locking and automatic release mechanism for easy and secure crimping
- Safety blade guard
- PP+TPR comfort plastic grip handles



ITEM NO.	CAPACITY	L (mm)	Weight (kg)	
				DKAC2420



Build-in crimp dies for 6P/8P modular connector

Strip flat cable

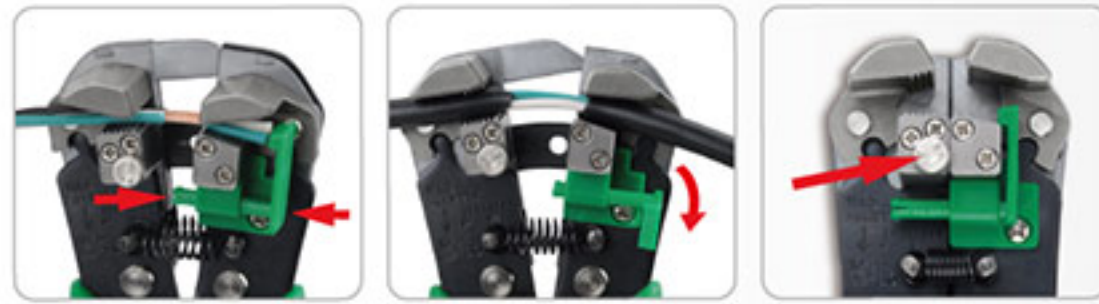


Cut flat and round cable

Strip round cable

Heavy Duty Self-Adjusting Wire Stripper

- Fully automatic cable strippers, wire cutters and crimping pliers
- Strip and cut wires/cable from 0.2 - 6.0 mm² (24 - 10 AWG)
- Crimp 0.5 - 6 mm² (22 - 10 AWG) insulated & non-insulated terminals
- Crimp 7 - 8 mm ignition terminals
- A micro adjustable knob for adjusting strip wire from 0.05 mm² (30 AWG) up to 8 mm² (8 AWG)
- ABS adjustable stopper for quickly setting the length of stripping wire
- Spring-loaded return for quick repetitive opening
- Ergonomic comfort-grip handle



• Wire stripper • Micro adjustable knob

ITEM NO.	STRIPPING CAPACITY		WIRE CUTTER Ømm	CRIMPING CAPACITY		L (mm)	W	H
	mm ²	AWG		mm ²	AWG			
DKAA2226	0.2 - 6.0	24 - 10	6	0.5 - 6.0	22 - 10	205	10	60

Heavy Duty Crimping Tool

- Crimp size easily selected by using screw adjustment, with clearly marked gauges on the side
- V-jaw holds terminals in place & prevents slipping
- Tubular handle design for reducing weight
- Optimum lever action requires less effort
- Suitable for crimping aluminum and copper terminals



ITEM NO.	CRIMPING CAPACITY		L (mm)	W	H
	mm ²	AWG			
DKCB2567	10 - 150	8 - 300MCM	670	1	5

Ratchet Crimping Tool for Non-Insulated Terminal

- Expert quality, Chrome Molybdenum Steel with hardened and tempered jaws
- Continuous crimping at preset tension ensures accurate and effective crimp
- Ratchet action ensures consistent crimp tension
- Comfortable and soft plastic anti-slip grip handle
- Suitable for most non-insulated terminals



ITEM NO.	CAPACITY		L (mm)	W	H
	mm ²	AWG			
DKBB2307	1.25 - 2 - 3.5	22 - 12	170	5	60

Ratchet Crimping Tool for Non-Insulated Terminal

- Expert quality, Chrome Molybdenum Steel with hardened and tempered jaws
- Continuous crimping at preset tension ensures accurate and effective crimp
- Ratchet action ensures consistent crimp tension
- Comfortable and soft plastic anti-slip grip handle
- Suitable for most non-insulated terminals



ITEM NO.	CAPACITY		L (mm)	W	H
	mm ²	AWG			
DKBB2315	5.5 - 8 - 14 - 22 - 38	12 - 2	380	1	12

Multi-Purpose Crimping Pliers



ITEM NO.	CAPACITY	W	H
DIBB2009	Insulated terminals 1.5, 2.5, 4, 6 mm ² Bolt cutter M2.6, M3, M3.5, M4, M5 Open barrel terminals 1.5, 2.5, 4-6 mm ² Wire stripper 0.75, 1.0, 1.5, 2.5, 4.0, 6.0 mm ² (with integral wire-cutter)	10	

Multi-Purpose Crimping Pliers



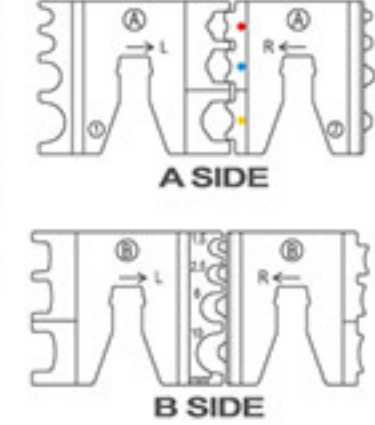
ITEM NO.	CAPACITY	W	H
DIBB1009	Insulated terminals 1.5, 2.5, 4, 6 mm ² Bolt cutter M2.6, M3, M3.5, M4, M5 Non-insulated terminals 1.5, 2.5, 4-6 mm ² Wire stripper 0.75, 1.0, 1.5, 2.5, 4.0, 6.0 mm ² (with integral wire-cutter)	10	

2-IN-1 Quick Interchangeable Ratchet Crimping Pliers (for Insulated and non-insulated terminals)

- Ratchet mechanism crimper stands for superior labor saving
- Unique exchangeable crimping jaws design for quick installing reversible insulated / non-insulated terminals
- Quick insertion changing of jaw without any tool
- Professional AISI 4140 Alloy Steel Crimping Jaws
- Ergonomic comfort-grip handle



• Adjustable • Quick Release



ITEM NO.	CAPACITY	L (mm)	W	H
DKCA2222	Insulated Terminal • AWG 22-18/16-14/12-10 • 0.5-1.0/1.5-2.5/4.0-6.0 mm ² Non-Insulated Terminal • AWG 20-18/16-14/12-10/8 • 1.5/2.5/6.0/10.0 mm ²	220	12	36

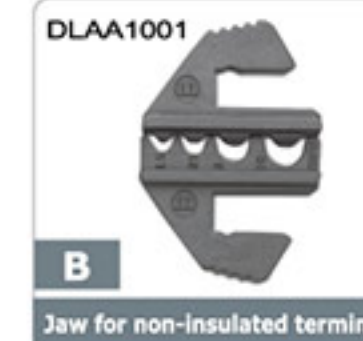
7PCS

Quick Interchangeable Ratchet Crimping Tool Kit

- Unique integrated lock with releasing mechanism design provides complete crimp
- Ratchet mechanism crimper stands for superior labor saving
- Quick insertion changing of jaw without any tool
- Professional AISI 4140 Alloy Steel Crimping Jaws
- Ergonomic comfort-grip handle
- Expert quality crimp tool set, suitable for electricians on a variety of applications

ITEM NO.	CONTENTS	W	H
GAAI0704	DKBA2426 Quick Interchangeable Ratchet Crimper DLAA0601 Insulated Terminal 0.5-1.0/1.5-2.5/4.0-6.0 mm ² DLAA1001 Non-Insulated Terminal 0.5-1.5/1.5-2.5/4.0-6.0/10.0 mm ² DLAA0602 Open-Barrel Terminal 0.5-1.0/1.5-2.5/4.0-6.0 mm ² DLAA0101 Open-Barrel Terminal 0.1-0.25/0.25-0.5/0.5-1.0 mm ² DLAA1002 Open-Barrel Terminal & D-Sub, V3.5 2.5/0.5/8.0-10.0 mm ² DLAA0102 Spark Plug Connector 1.0 mm ²	10 (SET)	

BLOW CASE: W295 x D235 x H53 (mm)



QUICK INTERCHANGEABLE RATCHET CRIMPER



- Crimping tool set with ratcheting function and adjustable jaws
- Includes 5 exchangeable crimping jaws
- Insulated terminal ends 0.5-6.0 mm²
- Non-insulated terminal ends 0.5-10.0 mm²
- Open-barrel terminal ends 0.5-6.0 mm²
- Insulated cord-end terminal ends 0.5-4.0 mm² (for small size)
- Insulated cord-end terminal ends 6.0-16.0 mm² (for large size)

6PCS

Quick Interchangeable Ratchet Crimping Tool Kit

- Ratchet mechanism crimper stands for superior labor saving
- Quick insertion changing of jaw without any tool
- Professional AISI 4140 Alloy Steel Crimping Jaws
- Ergonomic comfort-grip handle



ITEM NO.	CONTENTS	10 (SET)
GAA10605	DKBA2222 Quick Interchangeable Ratchet Crimper	
DLAA0601	Insulated Terminal 0.5-1.0/1.5-2.5/4.0-6.0 mm ²	
DLAA1001	Non-Insulated Terminal 0.5-1.5/1.5-2.5/4.0-6.0/10.0 mm ²	
DLAA0602	Open-Barrel Terminal 0.5-1.0/1.5-2.5/4.0-6.0 mm ²	
DLAA0401	Insulated Cord-End Terminal (for small size) 0.5/0.75/1.0/1.5/2.5/4.0 mm ²	
DLAA1601	Insulated Cord-End Terminal (for large size) 6.0/10.0/16.0 mm ²	

BLOW CASE: W280 x D195 x H50 (mm)

QUICK INSERTION CHANGING OF JAW WITHOUT ANY TOOL

Surface treatment

- Procedure: Precision and Wax-lost Casting
- Treatment: Finished with heat treatment (HRC 38 - 45)
- Zinc Phosphate Surface Treatment

A	Jaw for Insulated terminal	B	Jaw for non-insulated terminal	C	Jaw for open-barrel terminal	D	Jaw for insulated cord-end terminal (For small size)	F	Jaw for insulated cord-end terminal (For large size)
Suitable for	• AWG 22-18/16-14/12-10 • 0.5-1.0/1.5-2.5/4.0-6.0 mm ²	Suitable for	• AWG 20-16/16-14/12-10/8 • 0.5-1.5/1.5-2.5/4.0-6.0/10.0 mm ²	Suitable for	• AWG 20-18/16-14/12-10 • 0.5-1.0/1.5-2.5/4.0-6.0 mm ²	Suitable for	• AWG 22/20/18/16/14/12 • 0.5/0.75/1.0/1.5/2.5/4.0 mm ²	Suitable for	• AWG 10/8/6 • 6.0/10.0/16.0 mm ²
Material	• AISI 4140	Material	• AISI 4140	Material	• AISI 4140	Material	• AISI 4140	Material	• AISI 4140



Quick Interchangeable Systematic Die Series

- Professional AISI 4140 Alloy Steel crimping jaws
- Heat treated and tempered crimping jaw provides optimum crimping application
- For use with Model No's DKBA2222 and DKBA2426

Jaw for Insulated Terminal



A DLAA0601

ITEM NO.	(AWG)	CAPACITY (mm ²)	10	80
DLAA0601	22-18/16-14/12-10	0.5-1.0/1.5-2.5/4.0-6.0		

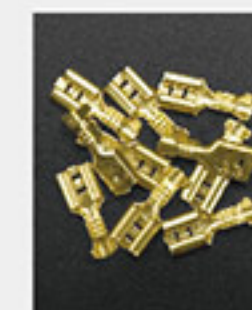
Jaw for Non-Insulated Terminal



B DLAA1001

ITEM NO.	(AWG)	CAPACITY (mm ²)	10	80
DLAA1001	20-16/16-14/12-10/8	0.5-1.5/1.5-2.5/4.0-6.0/10.0		

Jaw for Open-Barrel Terminal



C DLAA0602

ITEM NO.	(AWG)	CAPACITY (mm ²)	10	80
DLAA0602	20-18/16-14/12-10	0.5-1.0/1.5-2.5/4.0-6.0		



G DLAA0101

ITEM NO.	(AWG)	CAPACITY (mm ²)	10	80
DLAA0101	26-24/24-22/22-18	0.1-0.25/0.25-0.5/0.5-1.0		

Jaw for Insulated Cord-End Terminal



D DLAA0401 (for small size)

ITEM NO.	(AWG)	CAPACITY (mm ²)	10	80
DLAA0401	22/20/18/16/14/12	0.5/0.75/1.0/1.5/2.5/4.0		



F DLAA1601 (for large size)

ITEM NO.	(AWG)	CAPACITY (mm ²)	10	80
DLAA1601	10/8/6	6.0/10.0/16.0		

Jaw for Open-Barrel Terminal & D-Sub, V3.5



H DLAA1002

ITEM NO.	(AWG)	CAPACITY (mm ²)	10	80
DLAA1002	14/22/8-6	2.5/0.5/8.0-10.0		

Jaw for Spark Plug Connector



H1 DLAA0102

ITEM NO.	(AWG)	CAPACITY (mm ²)	10	80
DLAA0102	17	1.0		

397

Quick Interchangeable Systematic Die Series

- Professional AISI 4140 Alloy Steel crimping jaws
- Heat treated and Tempered crimping jaw provides optimum crimping application
- For use with Model No's DKBA2222 and DKBA2426

Jaw for 1.5 Superseal Terminal



H2 DLAH2016				H3 DLAH3017					
ITEM NO.	AWG	CAPACITY mm ²	10	80	ITEM NO.	AWG	CAPACITY mm ²	10	80
DLAH2016	22-20/16	0.35-0.5/1.5	10	80	DLAH3017	18/17	0.75/1.0	10	80



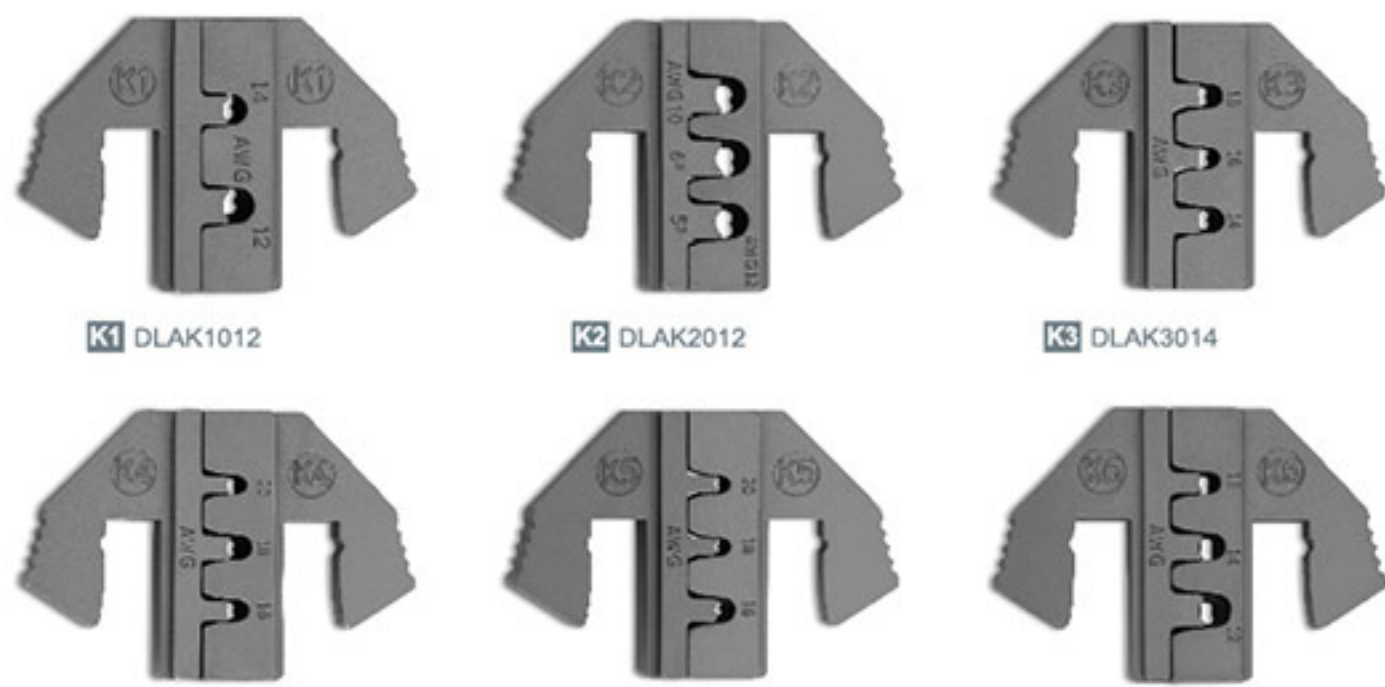
Jaw for Delphi Weather Pack Terminal



H6 DLAH6018				H7 DLAH7012					
ITEM NO.	AWG	CAPACITY mm ²	10	80	ITEM NO.	AWG	CAPACITY mm ²	10	80
DLAH6018	22/20-18	0.35/0.5-0.8	10	80	DLAH7012	16-14/12	1.0-2.0/3.0	10	80



Jaw for Deutsch Terminal



K1 DLAK1012				K2 DLAK2012				K3 DLAK3014						
ITEM NO.	AWG	CAPACITY mm ²	10	80	ITEM NO.	AWG	CAPACITY mm ²	10	80	ITEM NO.	AWG	CAPACITY mm ²	10	80
DLAK1012	14/12		10	80	DLAK2012	10/12	6.0/5.0	10	80	DLAK3014	18/16/14		10	80
DLAK4016			10	80	DLAK5016			10	80	DLAK6012	16/14/12		10	80

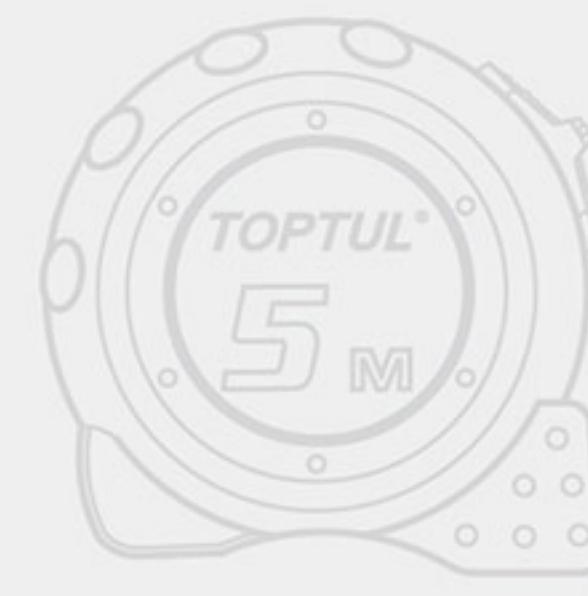


PROFESSIONAL
HAND TOOLS

398

OTHER TOOLS SERIES

Essential mechanical tools include pullers, crimping tools & bolt cutters.



OTHER TOOLS