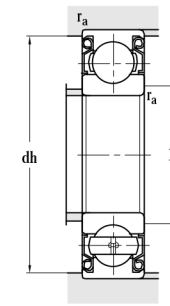
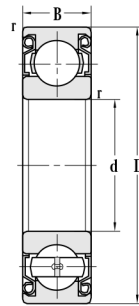
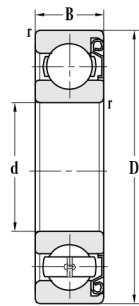


Deep Groove Ball Bearing(With Shields)

ZWZ

d 10~30 mm



Principal dimensions				Basic load ratings		Limit speed ratings	
d	D	B	r _{min}	C _r	C _{or}	Grease	Oil
mm				kN		r/min	
10	30	9	0.6	6.50	3.00	24000	30000
12	32	10	0.6	6.50	3.00	22000	28000
	32	10	0.6	6.50	3.00	22000	28000
15	35	11	0.6	8.00	4.00	19000	24000
	35	11	0.6	8.00	4.00	19000	24000
17	40	12	0.6	9.75	4.8	17000	20000
	40	12	0.6	9.75	4.8	17000	20000
20	42	12	0.6	9.55	5.00	17000	19000
	42	12	0.6	9.40	5.00	17000	19000
	47	14	1	13.0	6.70	15000	18000
	47	14	1	13.0	6.70	15000	18000
	52	15	1	13.8	6.90	13000	16000
	62	16	1	18.2	10.0	10000	13000
	62	16	1	18.2	10.0	10000	13000
25	47	12	0.6	11.4	6.28	15000	18000
	47	12	0.6	10.1	5.85	15000	15000
	52	15	1	14.3	8.00	12000	18000
	52	15	1	14.3	8.00	12000	15000
	62	17	1.1	22.4	11.5	11000	14000
28	58	16	1.1	12.0	9.00	11000	13800
	68	18	1.1	19.0	13.0	9500	12000
30	55	13	1	13.2	7.96	12000	15000
	55	13	1	13.2	7.96	12000	15000
	62	16	1	19.5	11.3	10000	13000
	62	16	1	19.5	11.3	10000	13000
	62	16	1	19.5	11.3	10000	13000
	62	16	1	19.5	11.3	10000	13000
	72	19	1.1	28.4	15.4	9000	11000
	72	19	1.1	28.4	15.4	9000	11000

Designations	Abutment and fillet dimensions				Weight
	D _{smin}	D _{smax}	dh _{max}	r _{amax}	
	mm				kg
6200-2Z	13.5	14.5	26	0.6	0.0270
6201-Z	16	16.5	28	0.6	0.0369
6201-2Z	16	16.5	28	0.6	0.0373
6202-Z	19		31	0.6	0.0432
6202-2Z	19		31	0.6	0.0450
6203-2Z	21		36	0.6	0.0665
6203-Z	21		36	0.6	0.0665
6004-Z-DW	24.5		37.5	0.6	0.071
6004-2Z	23.2		38.8	0.6	0.0704
6204-2Z	25		42	1	0.111
6204-Z	25		42	1	0.109
6304-2Z	27		45	1	0.152
6304X3-2Z	35.6		56.4	1	0.255
6304X3/C3	35.6		56.4	1	0.252
6005-Z	28.2		43.8	0.6	0.0769
6005-2Z	28.2		43.8	0.6	0.0783
6205-2Z	30		47	1	0.135
6205-Z	30		47	1	0.136
6305-2Z	32		55	1	0.218
62/28-ZN	35		51	1	0.179
63/28-ZN	35		61	1	0.292
6006-2Z	35		50	1	0.118
6006-Z	34.6		50.4	1	0.119
6206-2Z	35		57	1	0.207
6206-Z	35		57	1	0.208
6206-ZS	35		57	1	0.205
6306-2Z	36.5		65.5	1	0.357
6306-Z	36.5		65.5	1	0.356